

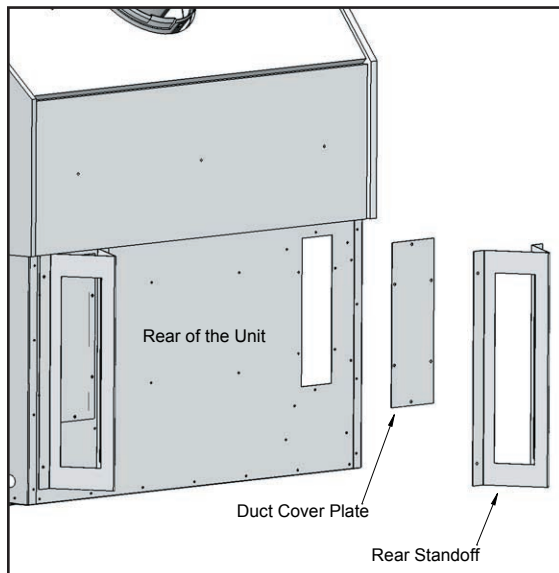


# Westgate

LUXURY FIREPLACES

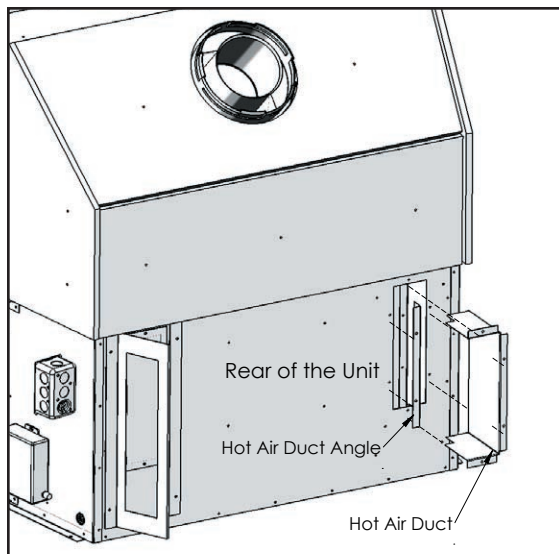
Please ensure that your Heat Distribution Kit has not been damaged.

1. Remove the rear standoff and the duct cover plate from the back of the unit.



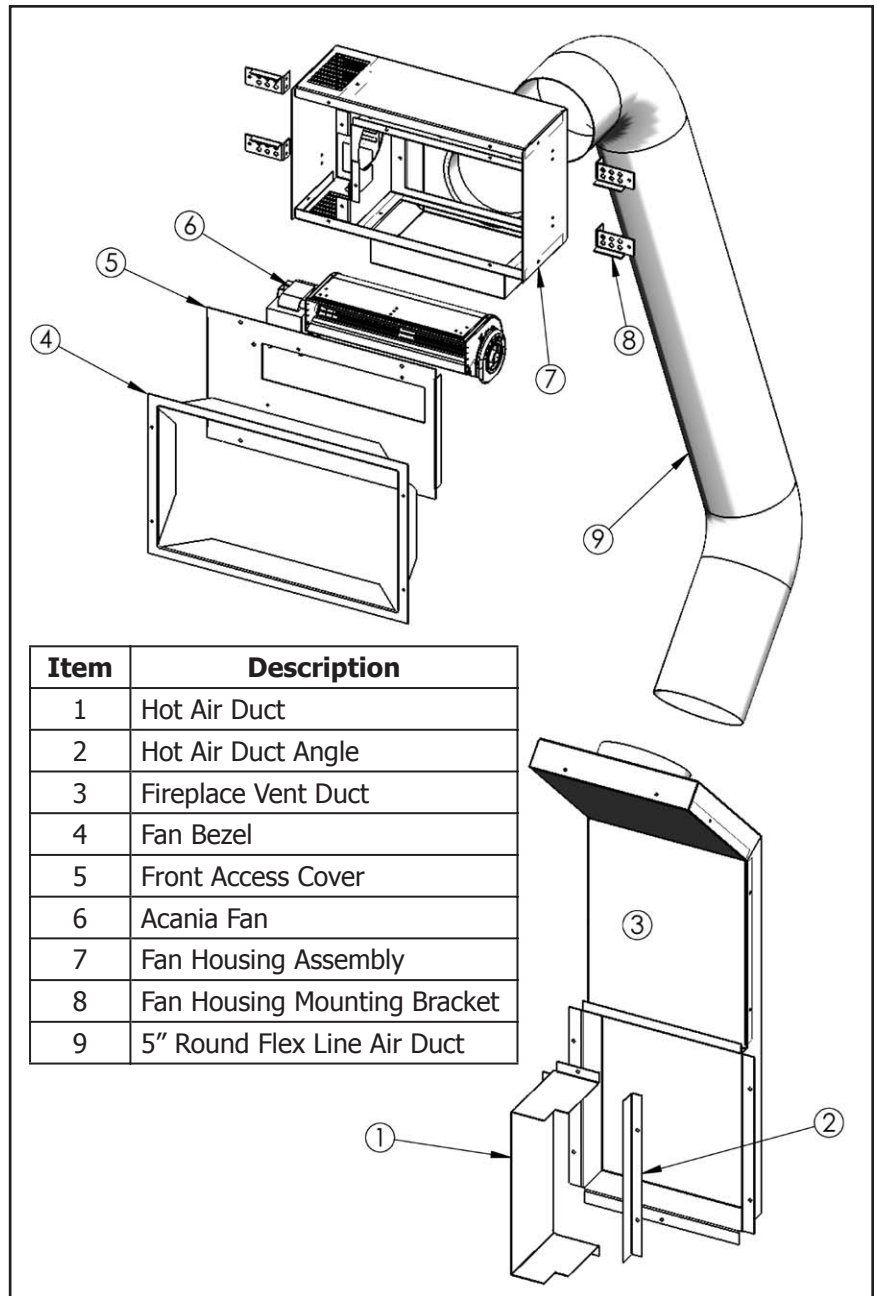
**Figure 2: Remove the duct cover.**

2. Insert the hot air duct and the hot air duct angle into the cut out (refer to Figure 3). Secure the ducts to the back of the fireplace through the pre-drilled holes with hex head screws.



**Figure 3: Install the hot air ducts.**

# 50-1935 Heat Distribution Kit

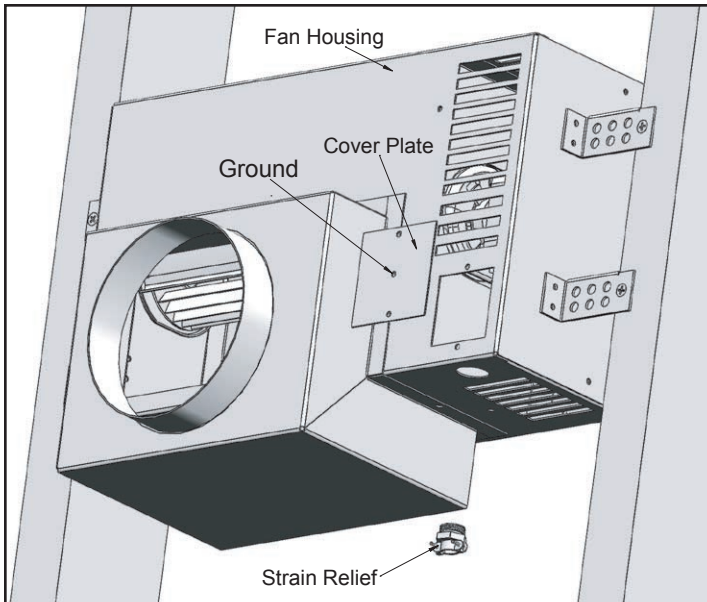


Item	Description
1	Hot Air Duct
2	Hot Air Duct Angle
3	Fireplace Vent Duct
4	Fan Bezel
5	Front Access Cover
6	Acania Fan
7	Fan Housing Assembly
8	Fan Housing Mounting Bracket
9	5" Round Flex Line Air Duct

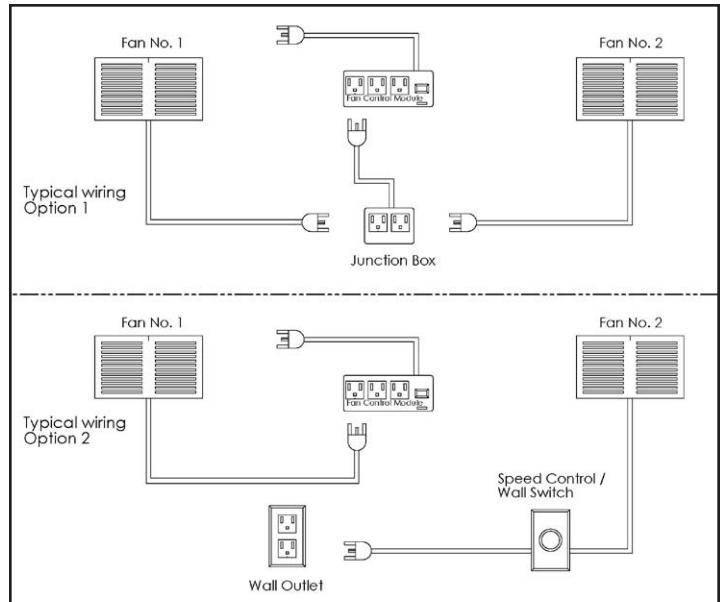
**Figure 1: Heat Distribution Kit's Parts Diagram.**

3. Cover the hot air duct opening with the Fireplace Vent Duct (refer to Figure 4). Push the vent duct kit against the back of the fireplace and secure it in place with five (5) 1/4" HWH self drilling screws.
4. With the "FIGURE 5: FAN HOUSING OVERALL DIMENSIONS." and "FIGURE 6: MINIMUM INSTALLATION CLEARANCES FOR FAN." Cut a opening for the fan in the wall board; minimum 14 3/8" by 8 3/8". It cannot be less than 12" from the ceiling and 1 3/4" between fan housing to the closest stud or combustible materials. Do not install in front of the vent.





**Figure 8: Wiring fan.**



**Figure 9: Fan wiring options.**

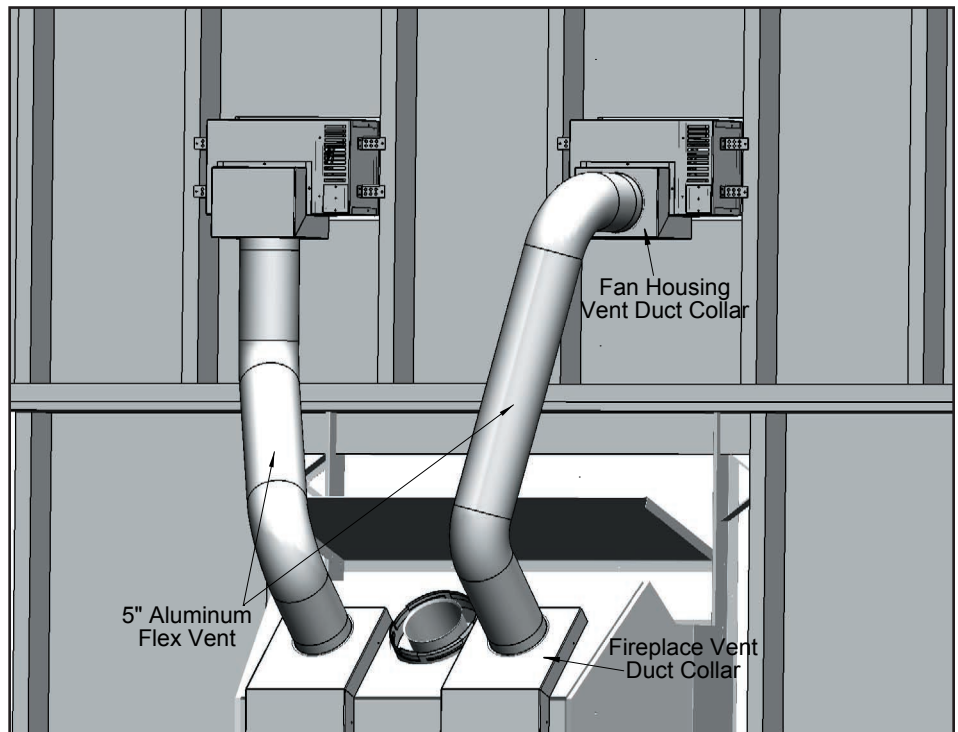
8. Attach the 5" Aluminum Flex Vent to the Fireplace Vent Duct Collar with sheet metal screws or a vent strap and run the vent to the Fan Housing Vent Duct Collar. The Fan Housing Vent Duct can be installed through the rear or the bottom of the Fan Housing as shown in Figure 10.

**IMPORTANT:** Maintain a minimum of 2" (51mm) clearance between the flex lines and combustible materials.

Optional Note: An 8ft (2.4m) 5" Aluminum Flex Vent is provided. Extra length of 5" Aluminum Flex Vent can be added using a coupling provided by the installer

9. Attach the fan bezel to the fan cut out and secure the fan bezel to the wall board with screws.

10. Cover the cut out with a fan grille.



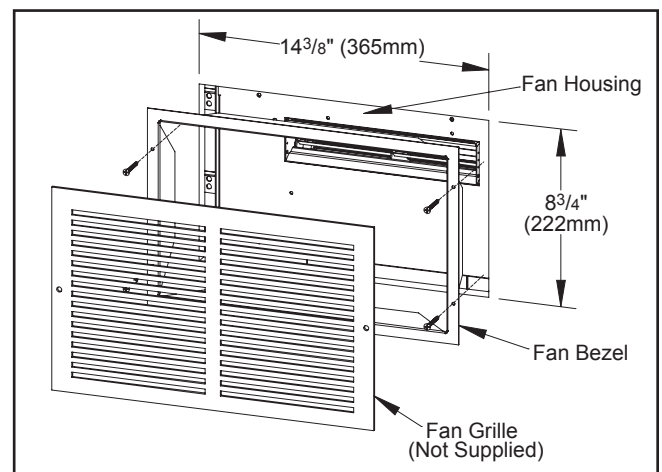
**Figure 10: Optional install with two (2) heat distribution kits.**

When installed, the Power Vent Kit, must be electrically grounded in accordance with local codes or, in the absence of local codes, with the National Electrical Code, ANSI/NFPA 70, or the Canadian Electrical Code, CSA C22.1.

**WARNING: Electrical Grounding Instructions**

This appliance is equipped with a three-prong (grounding) plug for your protection against shock hazard and should be plugged directly into a properly grounded three-prong receptacle. Do not cut or remove the grounding prong from this plug.

Periodic examination of venting systems should be done by a qualified agency.



**Figure 11: Install fan bezel & grille.**

MANUFACTURED BY:  
SHERWOOD INDUSTRIES LTD.  
6782 OLDFIELD RD. SAANICHTON, BC, CANADA V8M 2A3  
July 23, 2009  
[www.westgatefireplaces.com](http://www.westgatefireplaces.com)  
C-11968